

PHILCO AUTO RADIO

STUDEBAKER INTERNALLY CONTROLLED COWL ANTENNA STUDEBAKER PART NO. A. C. - 1237

PHILCO PART NO. 91-0230

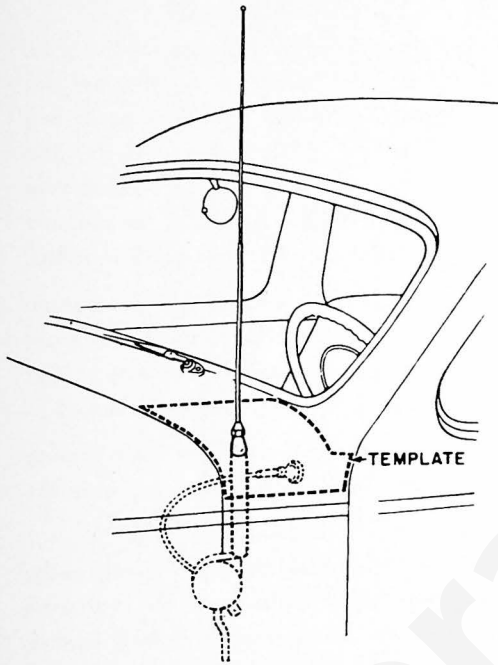


FIG 1
PARTS LIST

| Description | Part No. |
|-----------------------|----------|
| Complete Assembly | 91-0230 |
| Dress Nut | 97-0241 |
| Stanchion, Upper | 55-1424 |
| Stanchion, Lower | 55-1423 |
| Gasket | 55-1453 |
| Flat Washer | 97-0248 |
| P. K. Screw | W-708FA3 |
| Drain Tube | 55-1506 |
| Retaining Ring | 57-2533 |
| Shaft Housing Nut | 28-6374 |
| Shaft Bushing Nut | 97-0132 |
| Flex. Shaft Assy. | 77-1120 |
| Lead-in | 95-0224 |
| Reel Mounting Bracket | 57-2652 |
| Reel Case Cover | 57-2651 |
| Large Lockwasher | 97-0140 |

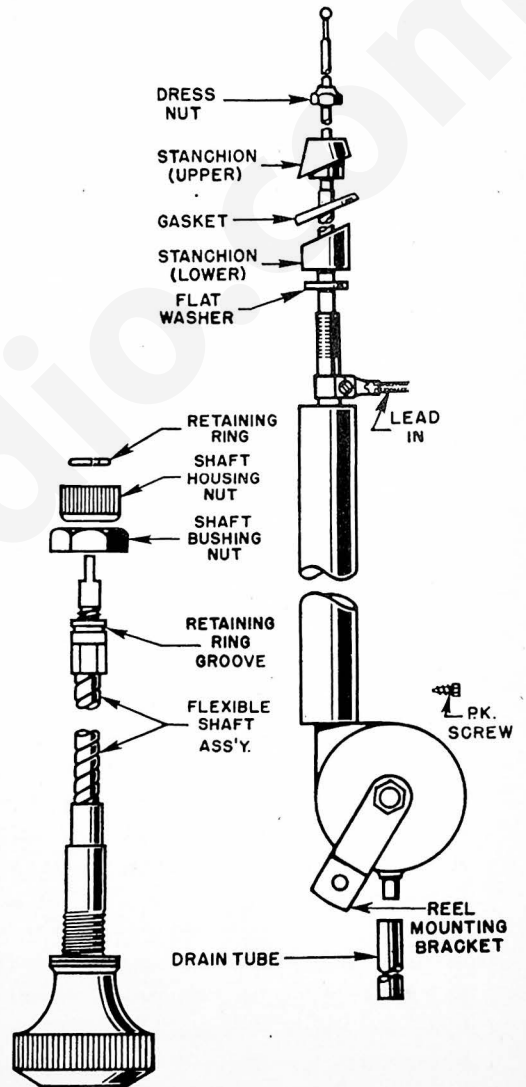


FIG. 2

(Over)

STUDEBAKER INTERNALLY CONTROLLED COWL ANTENNA

STUDEBAKER PART NO. A. C. - 1237

PHILCO PART NO. 91-0230

INSTALLATION INSTRUCTIONS

THE ANTENNA IS MOUNTED THROUGH THE COWL ON THE DRIVER'S SIDE WITHOUT REMOVING THE COWL TRIM PANEL (AS SHOWN IN FIGURE 1).

TO INSTALL:

1. A paper template is provided in the package for locating the hole to be drilled through the cowl for the antenna. Place this template on the cowl as shown in Figure 1 and fit the cut-out in the template around the break at the base of the windshield pillar toward the outside of the car. The opposite edge of the template will then line up with the hood openings. (It is important that the template be accurately located in order to assure the proper fitting of the antenna.) Accurately center punch the hole location as shown on the template. Drill a $1/8$ " pilot hole and enlarge with a $3/4$ " hole saw.
2. Refer to Figure 2 and remove the dress nut, the upper stanchion and the rubber gasket from the antenna assembly.
3. Insert the antenna from the inside of the car into the hole drilled in the cowl, and with the reel flat against the cowl trim panel reassemble the rubber gasket, the upper stanchion and the dress nut as shown, and tighten securely.
4. Using the hole in the reel mounting bracket as a guide, drill a $1/8$ " hole through the cowl trim panel and the brace just behind it, then fasten these together with the No. 8 self-tapping screw.
5. A $3/8$ " dia. hole must be drilled for the drain tube; locate this hole 2" below the reel and drill through both the cowl trim panel and the "climatizer" panel just behind it. The rubber drain tube may then be pressed over the short pipe on the bottom of the reel and the other end inserted into the hole just drilled.
6. A mounting hole is provided in the control panel that holds the hood latch release knob; remove the plug button from this hole so that the antenna control knob may be attached.
7. Remove the retainer ring, the shaft housing nut and the knob shaft bushing nut from the flexible shaft assembly. See Figure 3.
8. Pass the flexible shaft through the hole in the panel and tighten in place with the knob shaft bushing nut. Re-assemble the shaft housing nut and retainer ring.
9. Attach the end of the flexible shaft to the reel with the shaft housing nut. Make sure the end on the flexible shaft engages the shaft in the reel.
10. (On 1941 cars this antenna knob shaft assembly must be attached with a separate bracket Studebaker stock No. AC1258 which fastens to the lower edge of the instrument panel.)
11. Plug the lead-in into the radio and adjust the antenna compensator. (See Installation Instructions with radio.)